

Mt. Pleasant Transportation Study

Presented By:

Team DCI

8950 Route 108 East, Suite 229
Columbia, MD 21045
301-982-1550

October 16, 2008
Advisory Committee Meeting



DISTRICT DEPARTMENT OF TRANSPORTATION

Study Conducted by: Daniel Consultants, Inc., lee + papa and associates, and KLS Engineering

Introductions



DISTRICT DEPARTMENT OF TRANSPORTATION

Study Conducted by: Daniel Consultants, Inc., lee + papa and associates, and KLS Engineering

Introductions



Callistus Nwadike
Gabriela Vega
DDOT Project Manager



Transportation Engineering and Planning
www.danielconsultants.com



Transit, Pedestrian, Bicycle Safety
www.kls-eng.com/

lee+papaandassociates



Urban Design
www.leeandassociatesinc.com/

Multi-Cultural Services
Community Outreach www.Mcsdc.org



Study Conducted by: Daniel Consultants, Inc., lee + papa and associates, and KLS Engineering

3

DDOT Objectives for the Study



The District Department of Transportation (DDOT) initiated the Mount Pleasant Transportation Study to examine existing traffic conditions in the study area and identify alternative traffic management and infrastructure improvements to meet the following primary objectives:

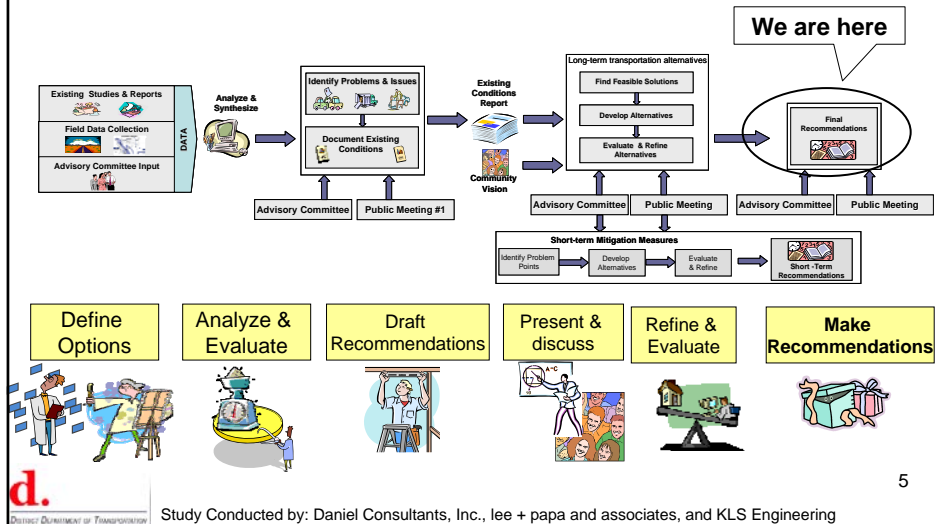
- Enhance efficiency of all modes of transportation
- Promote safety of vehicles, bicycles and pedestrians
- Enhance streetscape consistent with the area
- Address bicycle and pedestrian transportation needs
- Address transit needs Objectives:



Study Conducted by: Daniel Consultants, Inc., lee + papa and associates, and KLS Engineering

4

Study Process – Where are we now?



DDOT Next Steps

- Implement short-term recommendations
 - pavement markings
 - Signage
- Mid-term recommendations
 - Sidewalk repairs
 - Traffic calming
- Longer-term
 - Streetscape
 - Signal improvements

Advisory Committee Agenda



1. Introductions
2. Advisory Committee Meeting
3. Public Meeting Approach
4. Overview of Findings and Recommendations
5. Area-wide Transportation Alternatives
6. Preferred Area-wide Alternative
7. Q&A



DISTRICT DEPARTMENT OF TRANSPORTATION

Study Conducted by: Daniel Consultants, Inc., lee + papa and associates, and KLS Engineering

